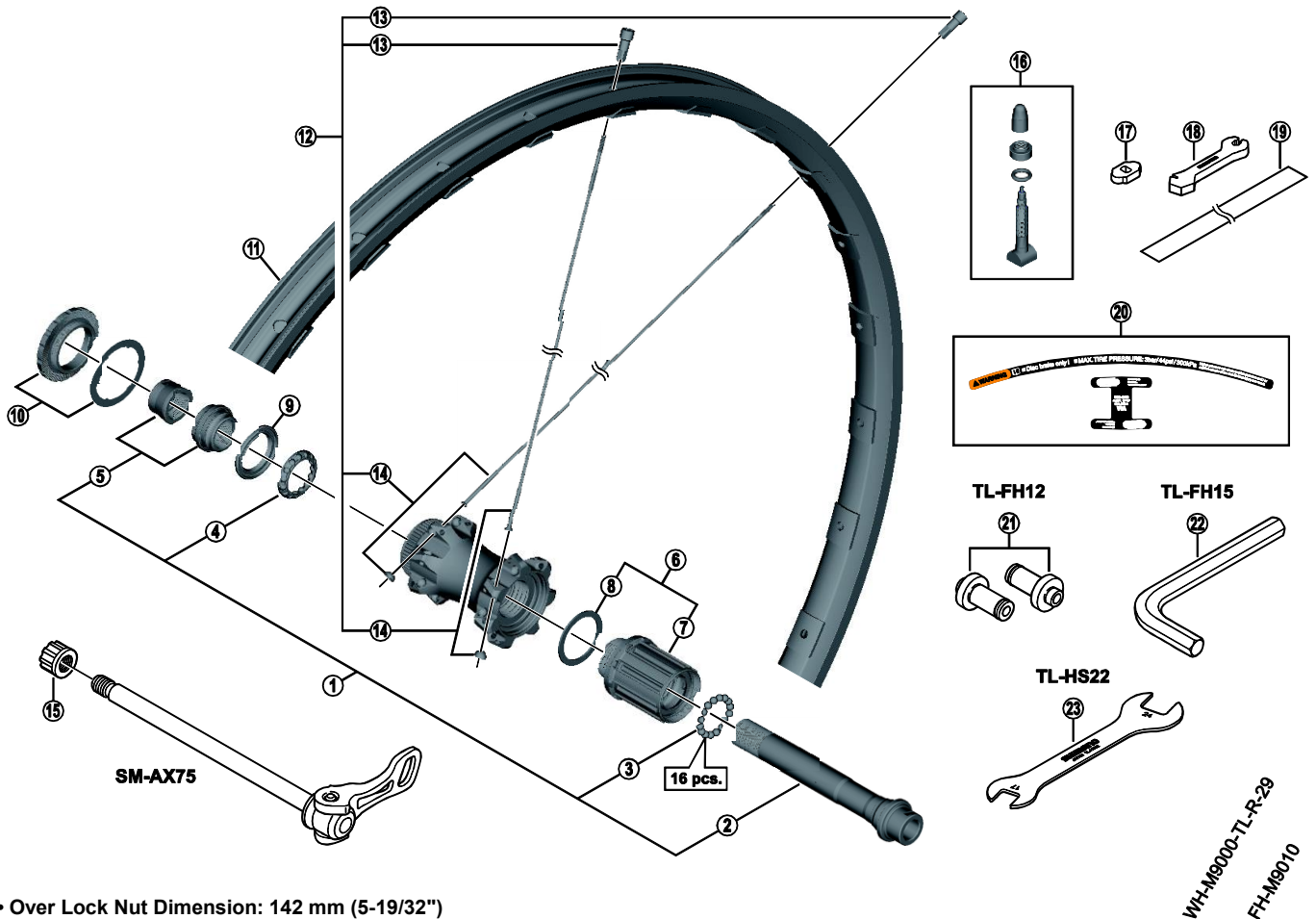


XTR Rear Wheel (MTB 11-Speed)

WH-M9020-TL-R12-29 For Disc Brake SM-AX75



• Over Lock Nut Dimension: 142 mm (5-19/32")

ITEM NO.	SHIMANO CODE NO.	DESCRIPTION	INTERCHANGEABILITY
1	Y38L98010	Complete Hub Axle	A
2	Y38L98020	Hub Axle Unit	A
3	Y4BR98130	Steel Ball (5/32") 34 pcs.	A A
4	Y27X98040	Ball Retainer (5/32" x 15)	A A
5	Y38L98030	Left Hand Lock Nut & Cone w/Dust Cover	A A
6	Y38L98050	Complete Freewheel Body	A A
7	Y38L98060	Freewheel Body Unit	A A
8	Y3CZ12000	Freewheel Body Washer	A A
9	Y27X14000	Left Hand Seal Ring	A A
10	Y29F98010	Lock Ring & Washer	A A
11	EWHRIM2F4L	Rim (28H)	
12	EWHSPOKE272L	Spoke Unit (Spoke (298 mm x 28 pcs.) / Spherical Washer (28 pcs.) / Nipple (28 pcs.))	A
13	Y012Z4079	Nipple	A
14	Y47V98030	Spoke (298 mm) w/Spherical Washer	A
15	Y27Y02000	SM-AX75 Fixing Nut (M12)	
16	Y4RJ98020	Valve Unit	
17	Y4RJ10000	Valve Tool	
18	Y4EF28000	Nipple Wrench 4.0	A
19	Y48F00010	Tubeless Tape	
20	Y48F98010	Rim Sticker Unit	A
21	Y13098011	TL-FH12 Hub Setting Tool	A
22	Y13098012	TL-FH15 Hexagon Wrench (15 mm)	A
23	Y3C227000	TL-HS22 Hub Spanner (17 mm x 24 mm)	A

A: Same parts.

B: Parts are usable, but differ in materials, appearance, finish, size, etc.

Absence of mark indicates non-interchangeability.

Jan.-2015-3802B

© Shimano Inc. I

Specifications are subject to change without notice.

SHIMANO