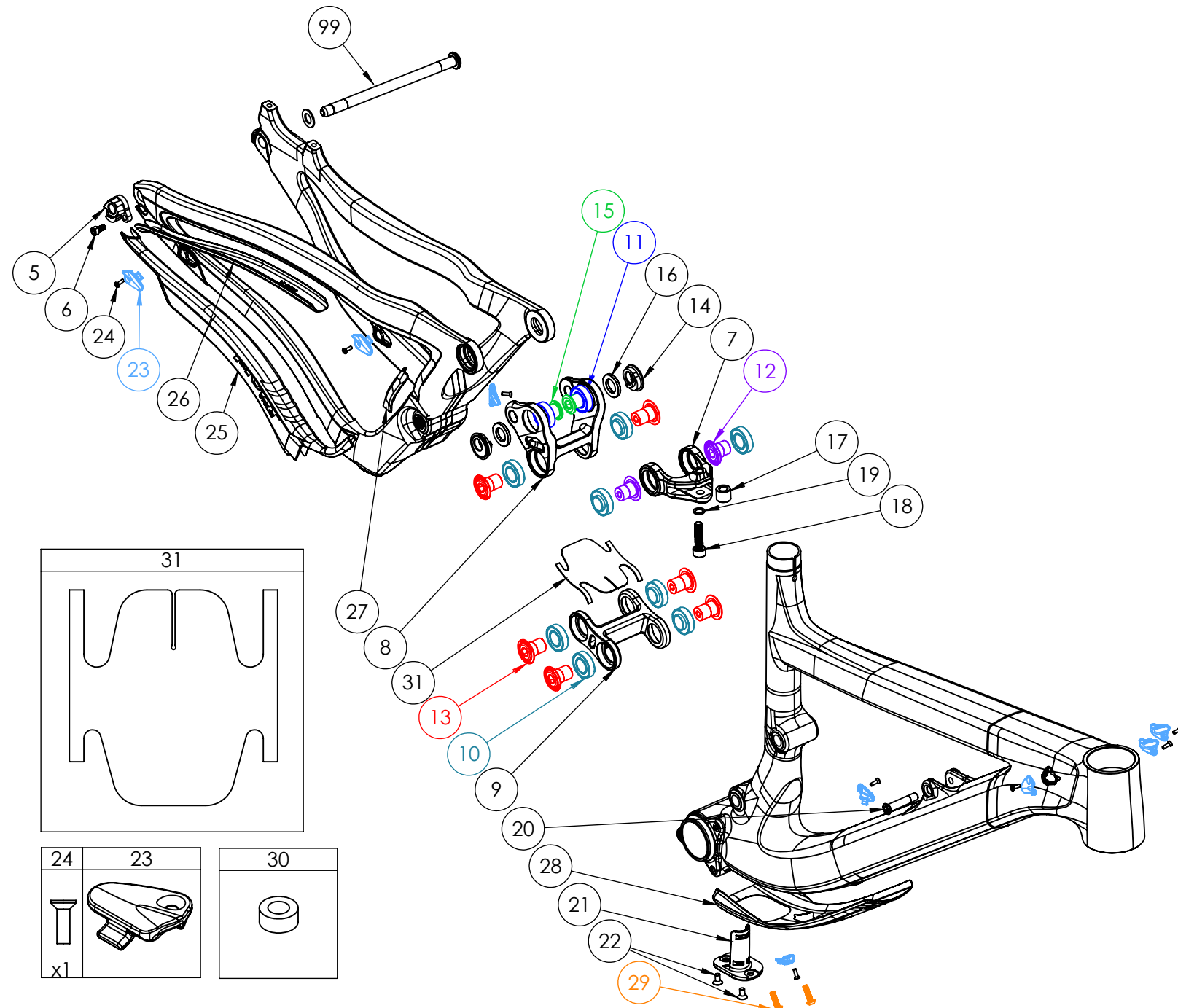


FIREBIRD 29 CARBON

NUMBER	PART NAME	DESCRIPTION	Torque	*
5	FP-RDH-TA-12MM-BLK-V3	Rear Derailleur Hanger 12mm TA		
6	FP-SCW-SCK-M5*10	M5x10 Rear Derailleur Hanger Screw	7 Nm (5 lb-ft)	○
7	FP-CLV-45MM-V1-R1	45mm Clevis		
8	FP-LNK-UL-54.6MM-V1-R1	54.6mm Upper Link		
9	FP-LNK-LL-45MM-V1-R1	45mm Out-to-Out Lower Link		
10	FP-BRG-6902-LLUMAXECN	28mm 6902 Extended Max-E Bearing		
11	FP-BRG-6902-LLUMAX	28mm 6902 Standard Max Bearing		
12	FP-BLT-M14*17-BLK	M14x17 Upper Link Bolt	35 Nm (27 lb-ft)	□
13	FP-BLT-M14*20-BLK-V2	M14x20 Lower Link Bolt	35 Nm (27 lb-ft)	□
14	FP-NUT-FLIPCHIP-4.6MM-V1	4.6mm Flip Chip		
15	FP-BLT-M14*20-BLK-V3	M14x20 Flip Chip Bolt	35 Nm (27 lb-ft)	□
16	FP-WSH-SPC-15I*25O*3W	M14x3mm Flip Chip Spacer		
17	FP-PIN-CLV-M8*15O-BLK-R2	M8 Clevis Shock Adapter Pin		○
18	FP-SCW-SCK-M8*30-R1	M8x30 Clevis Screw	28 Nm (21 lb-ft)	●
19	FP-WSH-8I*12O*1W	M8 Shock Bolt Washer (For Clevis Screw)		
20	FP-BLT-M8*38-BLK	M8x38 Front Shock Bolt	13 Nm (10 lb-ft)	●
21	FP-CVR-DI2-DT-V1	Di2 Downtube Battery Holder		
22	FP-SCW-FLT-M5*10	M5x10 Di2 DT Battery Cover Screws (Included with cover)		
23	FP-CLM-MECH-FRM-V1	Internal Routing Cable Clamp		
24	FP-SCW-FLT-M3*10	M3x10 Cable Clamp Screw (Included w/ Clamp)	**	
25	FP-PRO-FBC29-CS-V1-R1	Firebird 29 Carbon Chainstay Protector		
26	FP-PRO-FBC29-SS-V1-R1	Firebird 29 Carbon Seatstay Protector		
27	FP-PRO-FBC29-UR-V1-R1	Firebird 29 Carbon Upright Protector		
28	FP-PRO-FBC29-DT-V1-R1	Firebird 29 Carbon Downtube Protector		
29	PIVOT WB BOLTS V2	M5x0.8x18 Zinc Plated Steel Water Bottle Bolts		
30	PIVOT WB BOLT SPACER V2	M5 Water Bottle Bolt Spacer		
31	FP-PRO-45MM-LL-V1-R1	45mm Lower Link Protector		
99	157MM THROUGH AXLE V3	12x157mm Thru Axle w/ Washer		○



** See Bearing Assembly Procedure located in the tech specs section at www.pivotcycles.com

* ○ = grease ● = anti-seize ● = anti-seize or grease □ = loctite 243