

SHIMANO

SHIMANO EUROPA

Industrieweg 24 NL-8071 CT Nunspeet, Holland
Phone 31-3412-72222

SHIMANO AMERICAN CORPORATION

One Shimano Drive, P.O. Box 19615, Irvine,
California U.S.A. 92623-9615 Phone 714-951-5003

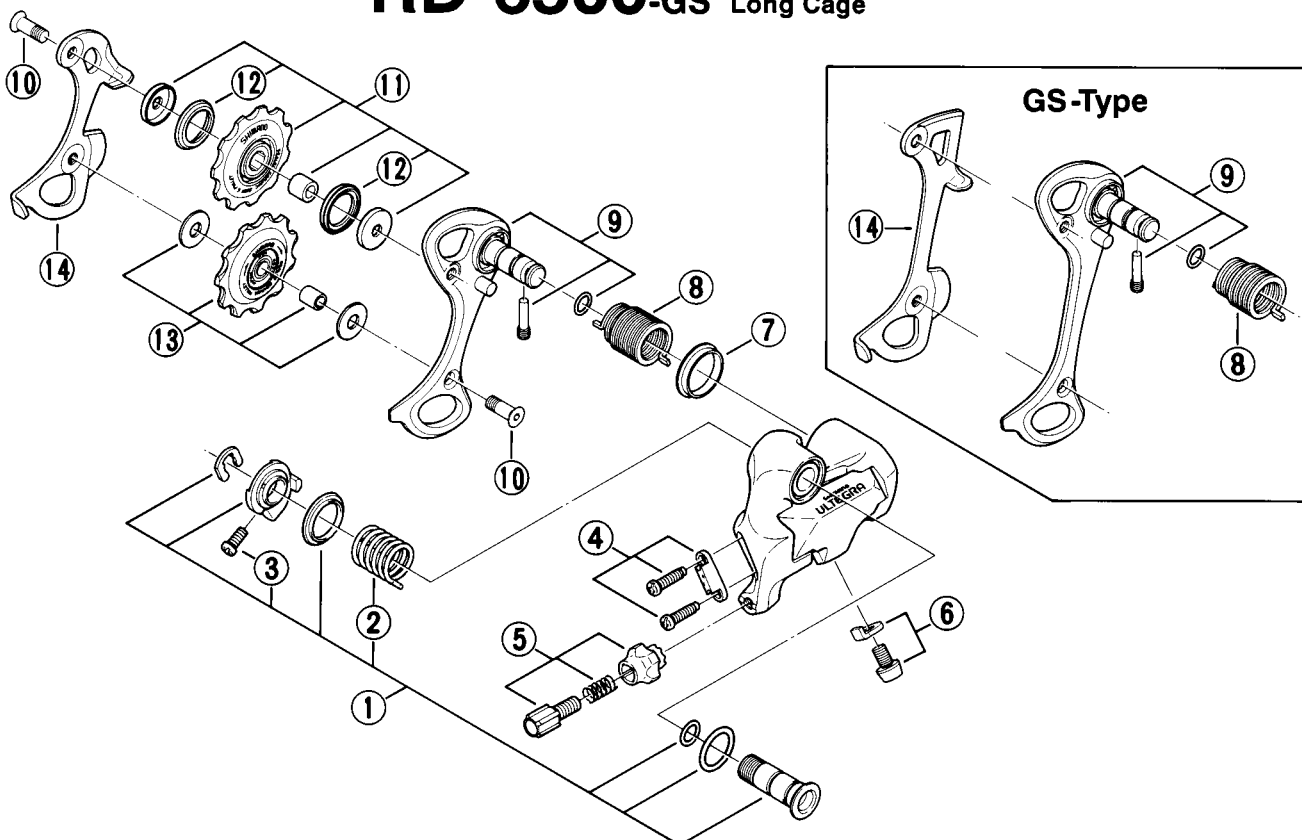
Small parts list for after market.

- You may photocopy this sheet and use it as an order form.
- Sie können dieses Blatt kopieren und als Bestellformular verwenden.
- Vous pouvez photocopier cette feuille et l'utiliser comme bon de commande.
- Dit blad kan gecopieerd en als bestelformulier gebruikt worden.
- Potete fotocopiare questo foglio e usarlo come modulo di commissione.

SHIMANO ULTEGRA Rear Derailleur (9-Speed or 8-Speed)

RD-6500-SS Short Cage

RD-6500-GS Long Cage



	Q'TY	ITEM NO.	SHIMANO CODE NO.	DESCRIPTION
		1	53Z 9801	B-Axis Assembly
		2	5TJ 2700	B-Tension Spring
		3	511 0501	B-Tension Adjusting Screw (M4 × 10)
		4	53Z 9803	Stroke Adjusting Screws (M4 × 14.5) & Plate
		5	53Z 9804	Cable Adjusting Bolt Unit
		6	53Z 9805	Cable Fixing Bolt (M5 × 8) & Plate
		7	5UC 1400	P-Seal Ring
		8	5UC 1210	P-Tension Spring (SS-Type)
			53Z 1600	P-Tension Spring (GS-Type)
		9	53Z 9806	Outer Plate Assembly (SS-Type)
			53Z 9808	Outer Plate Assembly (GS-Type)
		10	53M 2400	Pulley Bolt
		11	53Z 9810	Guide Pulley Unit
		12	53B 1800	Pulley Seal Ring
		13	53Z 9811	Tension Pulley Unit
		14	53Z 0800	Inner Plate (SS-Type)
			53Z 0900	Inner Plate (GS-Type)