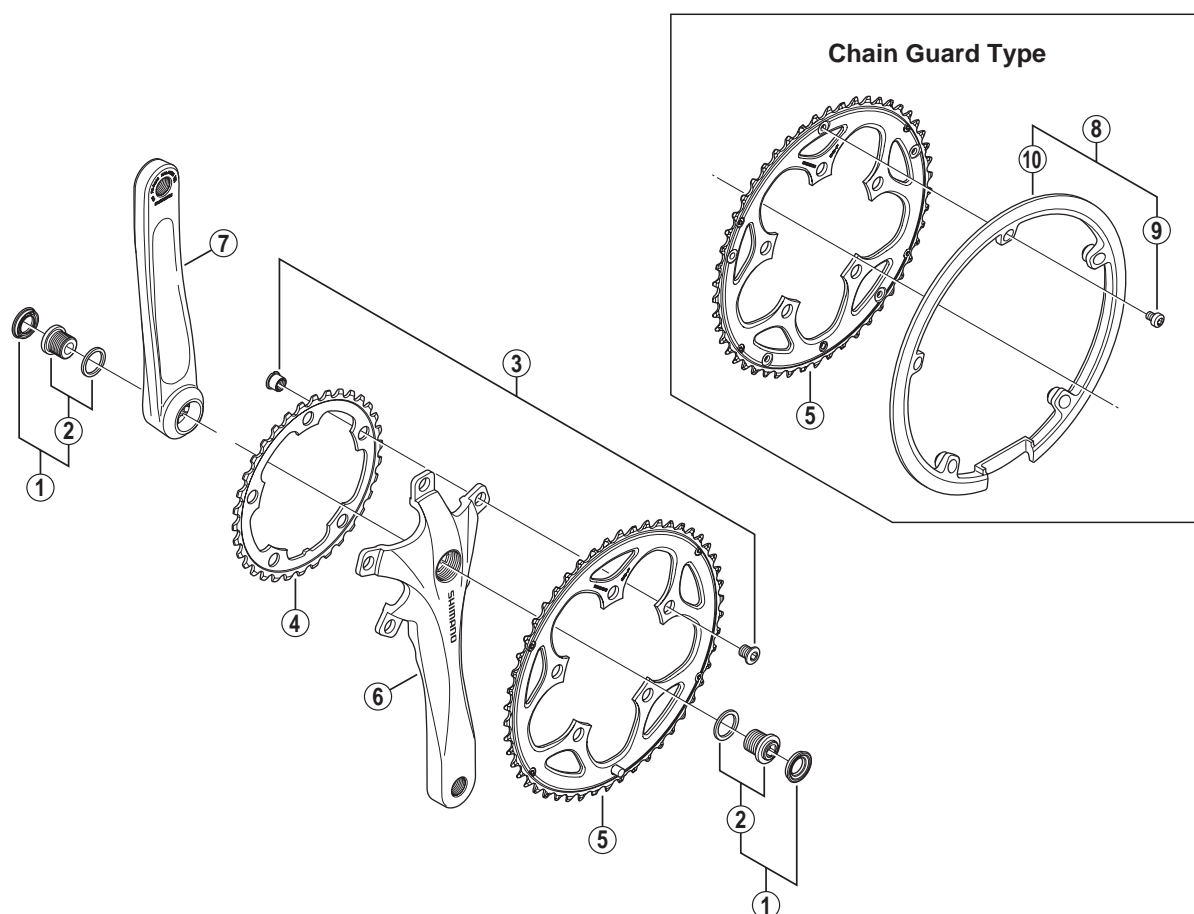


Front Chainwheel FC-R345



• Bolt circle diameter: 110 mm

| ITEM NO. | SHIMANO CODE NO. | DESCRIPTION | INTERCHANGEABILITY |
|----------|------------------|--|--------------------|
| 1 | Y1MY98010 | Crank Arm Fixing Bolt Unit (Crank Arm Cap: Silver) | |
| | Y1M098010 | Crank Arm Fixing Bolt Unit (Crank Arm Cap: Black) | |
| 2 | Y1M098020 | Crank Arm Fixing Bolt & Washer | |
| 3 | Y1LN98030 | Gear Fixing Bolt (M8 x 8.5) & Nut (5 sets) | A |
| 4 | Y1M834000 | Chainring 34T (Silver) | A |
| | Y1M834010 | Chainring 34T (Black) | A |
| 5 | Y1HA98050 | Chainring 50T-F (Silver) | |
| | Y1MY98030 | Chainring 50T-F (Black) | |
| | Y1HA98070 | Chainring 50T-F (Silver) for Chain Guard | |
| | Y1HA98080 | Chainring 50T-F (Black) for Chain Guard | |
| 6 | Y1MY05000 | Right Hand Crank Arm 170 mm (Silver) | |
| | Y1MY05010 | Right Hand Crank Arm 170 mm (Black) | |
| | Y1MY03000 | Right Hand Crank Arm 175 mm (Silver) | |
| | Y1MY03010 | Right Hand Crank Arm 175 mm (Black) | |
| 7 | Y1MY05100 | Left Hand Crank Arm 170 mm (Silver) | |
| | Y1MY05110 | Left Hand Crank Arm 170 mm (Black) | |
| | Y1MY03100 | Left Hand Crank Arm 175 mm (Silver) | |
| | Y1MY03110 | Left Hand Crank Arm 175 mm (Black) | |
| 8 | Y1HA98090 | Chain Guard & Fixing Bolts | |
| 9 | Y1BA98040 | Chain Guard Fixing Bolt (5 pcs.) | |
| 10 | Y1HA12000 | Chain Guard | A |

A: Same parts.

B: Parts are usable, but differ in materials, appearance, finish, size, etc.

Absence of mark indicates non-interchangeability.

FC-2350

May-2011-3242A

© Shimano Inc. I

Specifications are subject to change without notice.

SHIMANO