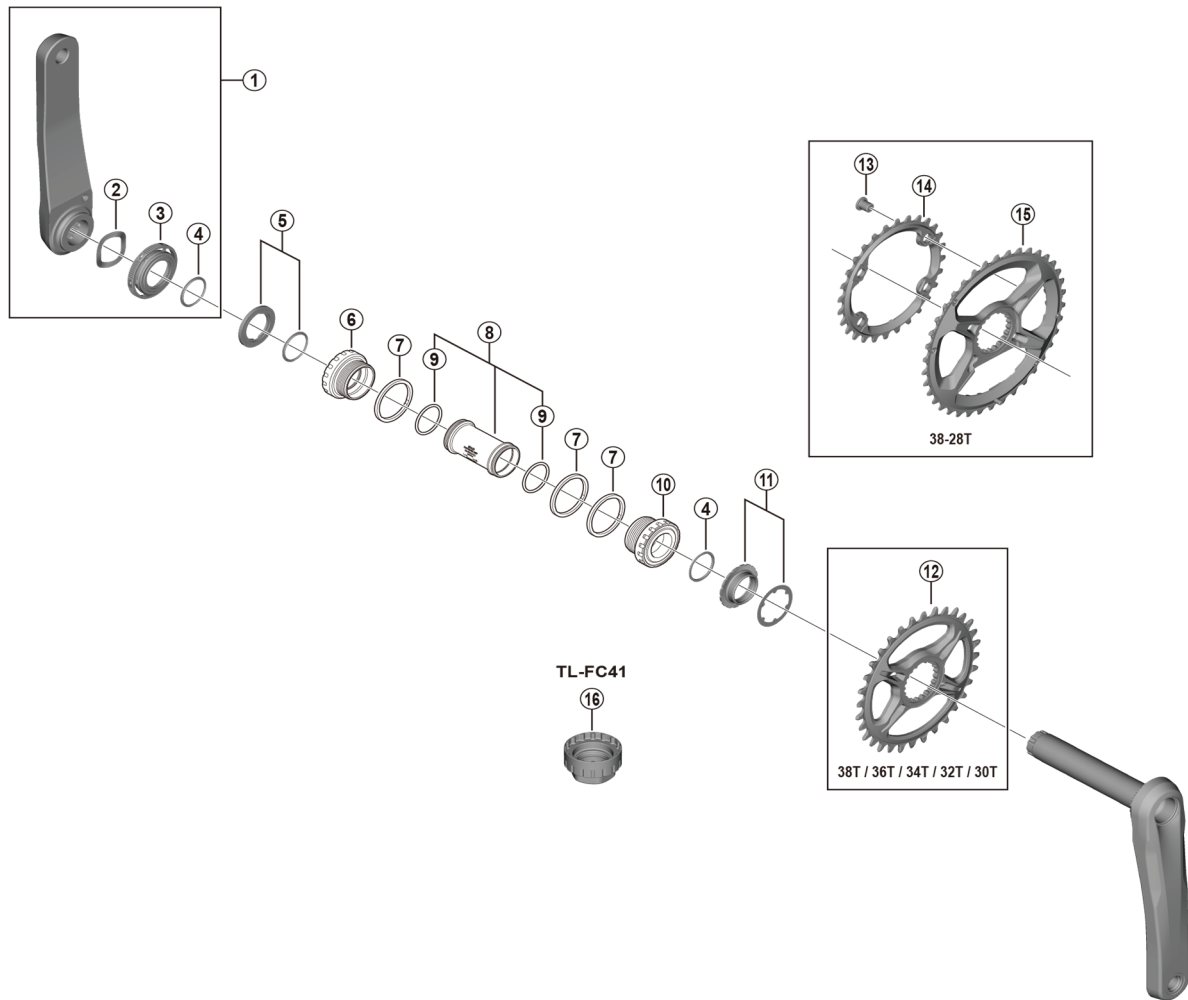


XTR Crankset  
**FC-M9120-1 FC-M9120-B2**  
**SM-BB93 SM-CRM95**



• Chaining teeth combinations: 38-28T / 38T / 36T / 34T / 32T / 30T

ITEM NO.	SHIMANO CODE NO.	DESCRIPTION
1	Y1X098020	Left Hand Crank Arm Unit 165 mm
	Y1X098030	Left Hand Crank Arm Unit 170 mm
	Y1X098040	Left Hand Crank Arm Unit 175 mm
2	Y1X027000	Wave Washer
3	Y1X026000	Adjust Nut
4	Y1F316000	Ring
5	Y1PW98070	Spacer & Ring
6	Y1P898010	Left Hand Adapter (B.C.1.37" x 24T) English Thread (SM-BB93)
7	Y1P804000	Spacer (2.5 mm)
8	Y1LR98090	Inner Cover & O-Ring
9	Y1TF21000	O-Ring
10	Y1P898020	Right Hand Adapter (B.C.1.37" x 24T) English Thread (SM-BB93)
11	Y1X098050	Lock Ring & Washer
12	ISMCRM95A0	Chainring 30T (SM-CRM95)
	ISMCRM95A2	Chainring 32T (SM-CRM95)
	ISMCRM95A4	Chainring 34T (SM-CRM95)
	ISMCRM95A6	Chainring 36T (SM-CRM95)
	ISMCRM95A8	Chainring 38T (SM-CRM95)
13	Y1RL98060	Gear Fixing Bolt (M8 x 9 / 1 Unit = 4 pcs.)
14	Y1X228000	Chainring 28T-BH for 38-28T
15	Y0G898010	Chainring 38T-BH for 38-28T
16	Y13098720	TL-FC41 Front Chaining Direct Mount Tool

Jun.-2018-4379  
 © Shimano Inc. I

Specifications are subject to change without notice.

**SHIMANO**