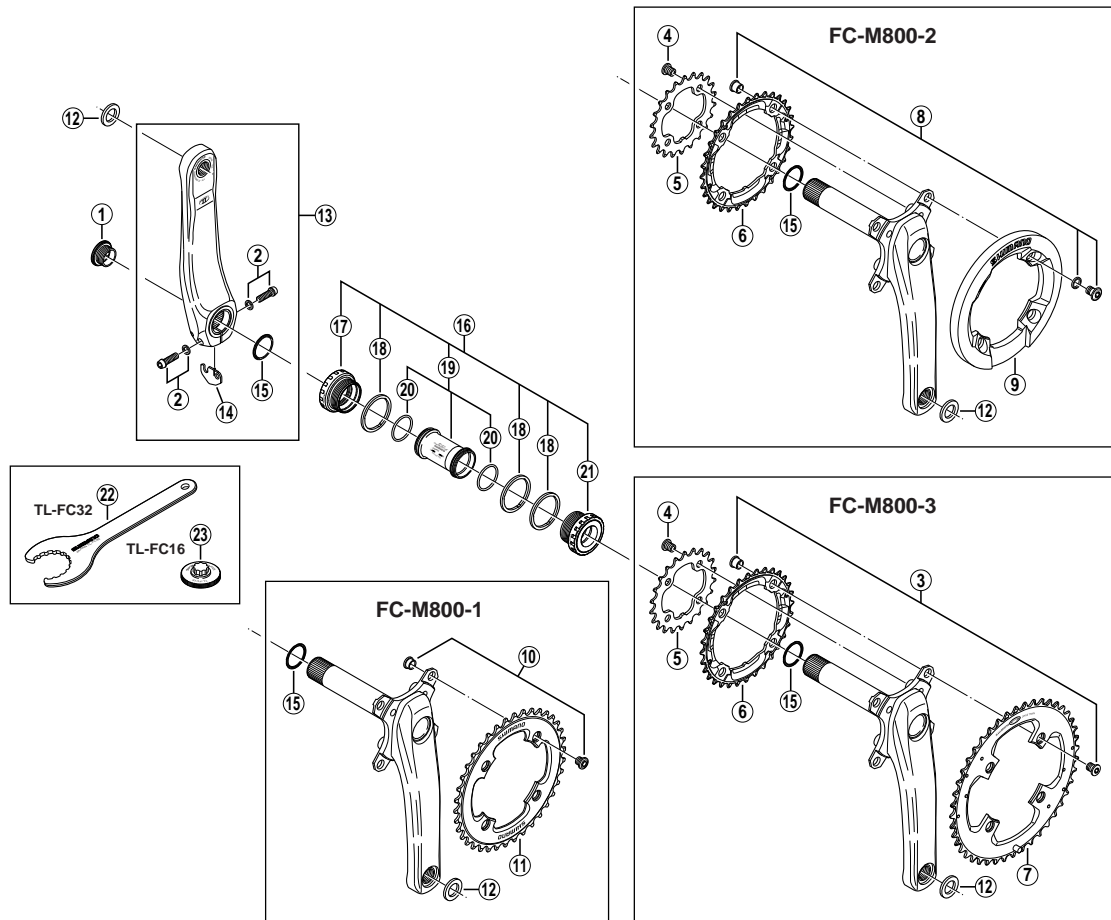


SAINT Front Chainwheel

FC-M800-3 Triple Gear
FC-M800-2 Double Gear

FC-M800-1 Single Gear



• Bolt circle diameter: 104 mm...(For outer gear and middle gear), 64 mm...(For inner gear)

ITEM NO.	SHIMANO CODE NO.	DESCRIPTION
1	Y-1E5 11000	Crank Arm Fixing Bolt
2	Y-1F8 98010	Clamp Bolt (M6 x 19) & Washer
3	Y-1C6 98020	Double Gear Fixing Bolt (M8 x 9.2) & Nut (4 sets)
4	Y-1BD98030	Inner Gear Fixing Bolt (M8 x 8.5 / 4 pcs.)
5	Y-1F8 22000	Chainring 22T (Black)
6	Y-1F8 98020	Chainring 32T (Black)
7	Y-1FA 98010	Chainring 44T (Black)
8	Y-1FB 98010	Fixing Bolt Unit (M8 x 10.5 / 4 pcs.)
9	Y-1FB 10000	Bash Guard
10	Y-1E5 98040	Gear Fixing Bolt (M8 x 7) & Nut (4 sets)
11	Y-1FC 34000	Chainring 34T (Black)
	Y-1FC 38000	Chainring 38T (Black)
	Y-1FC 42000	Chainring 42T (Black)
	Y-1FC 46000	Chainring 46T (Black)
* 12	Y-1GZ98010	Pedal Washer (2 pcs.)
*	Y-1FA 98020	Left Hand Crank Arm 165 mm
*	Y-1FA 98030	Left Hand Crank Arm 170 mm
* 13	Y-1FA 98040	Left Hand Crank Arm 175 mm
*	Y-1FA 98050	Left Hand Crank Arm 180 mm
* 14	Y-1FA 98060	Plate
* 15	Y-1F3 16000	Ring
16	Y-1FU 98110	Adapter Unit
17	Y-1FU 98090	Left Hand Adapter (B.C.1.37" x 24T) English Thread
18	Y-1F8 13000	Spacer (2.5 mm)
19	Y-1E5 98210	Inner Cover & O-Ring
20	Y-1TF 21000	O-Ring
21	Y-1FU 98100	Right Hand Adapter (B.C.1.37" x 24T) English Thread
22	Y-130 09210	TL-FC32 Adapter Installation Tool
23	Y-130 09220	TL-FC16 Crank Arm Installation Tool

0510-2277C