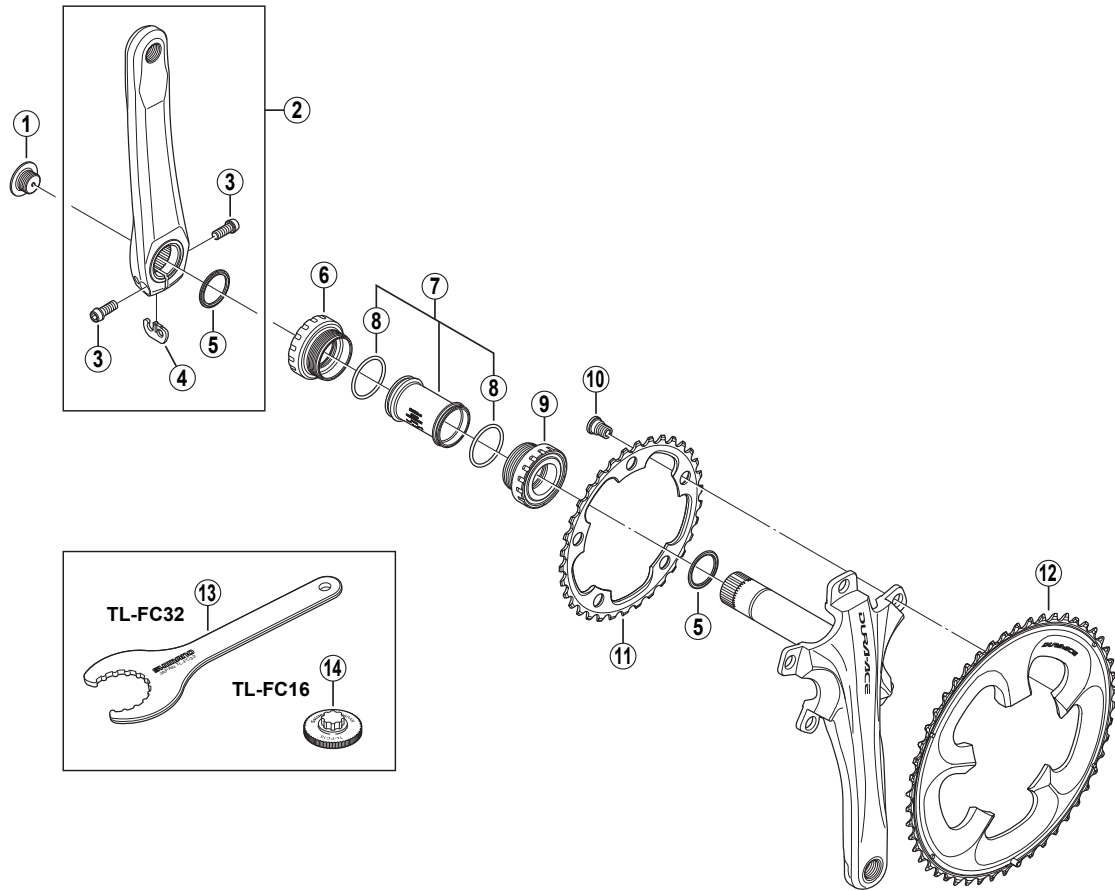


DURA-ACE Front Chainwheel FC-7950



• Bolt circle diameter: 110 mm

ITEM NO.	SHIMANO CODE NO.	DESCRIPTION	INTERCHANGEABILITY		
			FC-7900	FC-6650	FC-6650-G
1	Y-1KY 08000	Crank Arm Fixing Bolt	A	B	
	Y-1KY 98040	Left Hand Crank Arm 165 mm	A	B	B
	Y-1KY 98050	Left Hand Crank Arm 167.5 mm	A		
	Y-1KY 98060	Left Hand Crank Arm 170 mm	A	B	B
2	Y-1KY 98070	Left Hand Crank Arm 172.5 mm	A	B	B
	Y-1KY 98080	Left Hand Crank Arm 175 mm	A	B	B
	Y-1KY 98090	Left Hand Crank Arm 177.5 mm	A		
	Y-1KY 98100	Left Hand Crank Arm 180 mm	A		
3	Y-1E5 12100	Clamp Bolt (M6 x 15)	A		
4	Y-1GE98050	Plate	A	A	A
5	Y-1F3 16000	Ring	A	A	A
6	Y-1KY 98110	Left Hand Adapter (B.C.1.37" x 24T) English Thread	A	B	B
	Y-1KY 98120	Left Hand Adapter (M36 x 24T) Italian Thread	A	B	B
7	Y-1KY 98130	Inner Cover & O-Ring	A	B	B
8	Y-1TF 21000	O-Ring	A	A	A
9	Y-1KY 98140	Right Hand Adapter (B.C.1.37" x 24T) English Thread	A	B	B
	Y-1KY 98150	Right Hand Adapter (M36 x 24T) Italian Thread	A	B	B
10	Y-1KY 98160	Gear Fixing Bolt (5 pcs.)	A		
11	Y-1KZ 34000	Chainring 34T		B	B
12	Y-1KZ 98010	Chainring 50T-F			
13	Y-130 09210	TL-FC32 Adapter Installation Tool	A	A	A
14	Y-130 09220	TL-FC16 Crank Arm Installation Tool	A	A	A

A: Same parts.

B: Parts are usable, but differ in materials, appearance, finish, size, etc.

Absence of mark indicates non-interchangeability.

0808-2878

Specifications are subject to change without notice.

SHIMANO