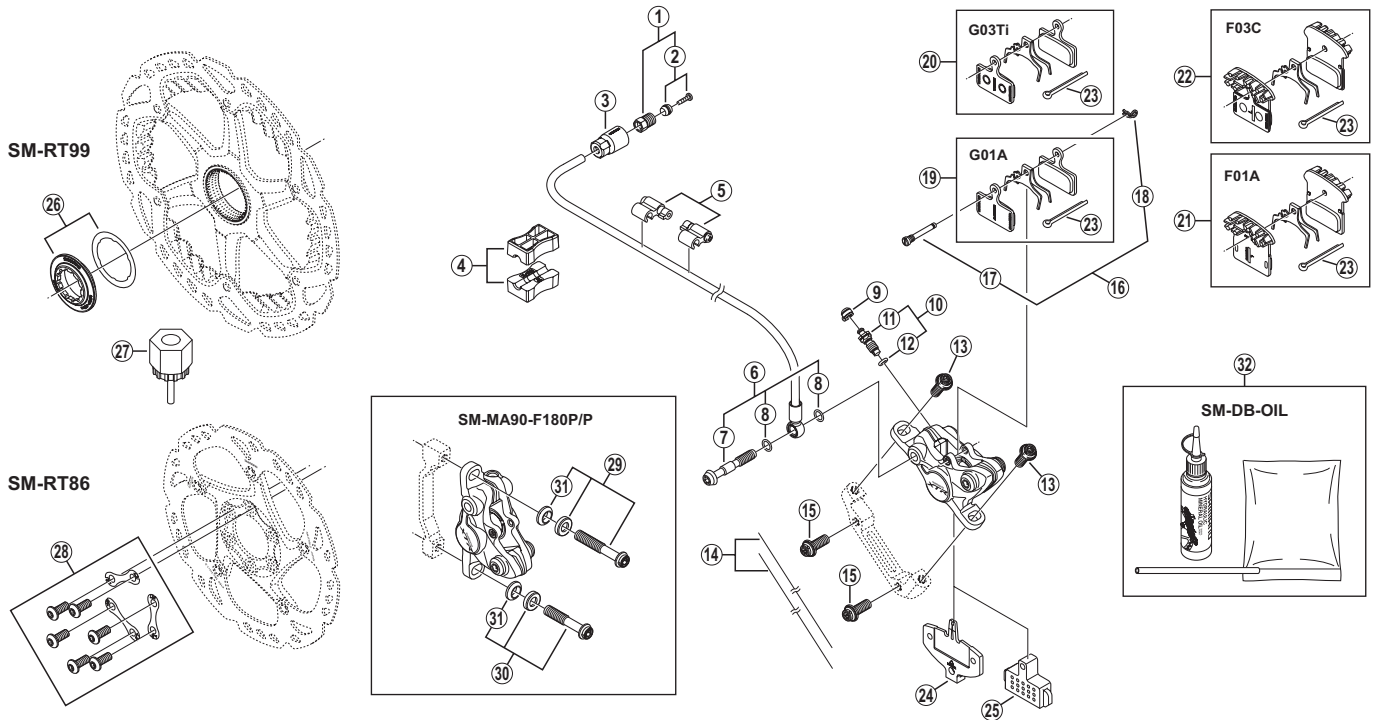


XTR Disc Brake  
**BR-M987** Brake Caliper  
**SM-BH90-SBM** Brake Hose

**SM-RT99** Disc Rotor/Center Lock  
**SM-RT86** Disc Rotor/6-Bolt



ITEM NO.	SHIMANO CODE NO.	DESCRIPTION
1	Y8JA98010	Connecting Bolt Unit
2	Y8JA98020	Olive & Connector Insert
3	Y8JA07000	Cover
4	Y8H198030	TL-BH61 Special Tool (2 pcs.)
5	Y83098040	SM-HANG Hose Supporter A & B
6	Y8LF98030	Banjo Bolt & O-Ring
7	Y8JA09000	Banjo Bolt
8	Y8SY28000	O-Ring
9	Y8B214000	Bleed Nipple Cap
10	Y8LF98010	Bleed Nipple & Seal Ring
11	Y8LF09000	Bleed Nipple
12	Y8B511001	O-Ring for Bleed Nipple
13	Y8LF08000	Caliper Fixing Bolt (M6 x 14.6)
14	Y8B298010	Wire (2 pcs.)
15	Y8J721000	Caliper Fixing Bolt (M6 x 15.2)
16	Y8LF98020	Pad Axle & Snap Retainer
17	Y8LF11000	Pad Axle
18	Y8J716000	Snap Retainer
19	Y8J79803A	Resin Pad (G01A) & Spring w/Split Pin
20	Y8J79804A	Metal Pad (G03Ti) & Spring w/Split Pin
21	Y8J79801A	Resin Pad (F01A) w/Fin & Spring w/Split Pin
22	Y8J79802A	Metal Pad (F03C) w/Fin & Spring w/Split Pin
23	Y8DB06100	Split Pin
24	Y8J709000	Pad Spacer
25	Y8J712000	Bleeding Spacer
26	Y8K198010	Lock Ring & Washer
27	Y12009230	TL-LR15 Lock Ring Removal Tool
28	Y8J298020	Rotor Fixing Bolt & Lock Washer
29	Y8LF98040	Caliper Fixing Bolt Unit (M6 x 36.3)
30	Y8LF98050	Caliper Fixing Bolt Unit (M6 x 30.5)
31	Y8LF12000	R-Washer A
32	Y83998010	Mineral Oil Bleed Kit (50 ml)

Nov.-2013-3614  
 © Shimano Inc. I

Specifications are subject to change without notice.

**SHIMANO**